



# PARTICLES

COLLECTION



## INTRODUCTION

What unites all the lighting fixtures in this collection is the multiplication or repetition of basic or finely modified elements. This creates unique fixtures that can be configured in almost unlimited ways. These lighting fixtures fit into large spaces in the form of custom-designed installations. For smaller interiors, our designers have also created more versatile variants.



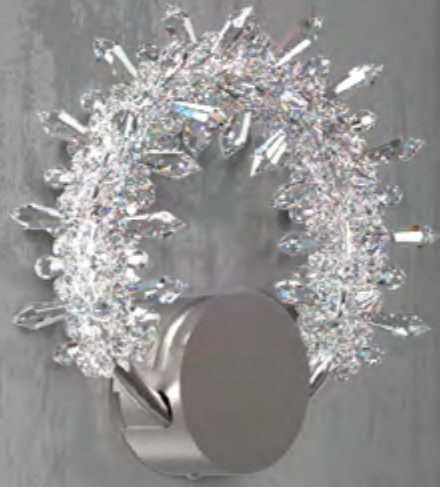
# SPARKLING FROST

This lighting fixture captures the beauty of ice and frost. Just as blades of grass are covered by ice crystals on a cold winter's day, the Sparkling Frost model is covered with glass hoar frost. The supporting and lighting part of the fixture is a central puck, from which a circle of stainless steel rod emerges. It is covered with a variety of large, clear trimmings, which can be complemented by blue or grey trimmings. The lighting fixture glitters beautifully and is the perfect addition to any modern interior.

Designed by **Jana Chvojková**









CHANDELIERS



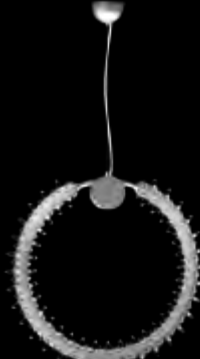
SPARKLING FROST 01 – CH  
350x350x80 | 3x1W LED



SPARKLING FROST 02 – CH  
350x350x80 | 3x1W LED



SPARKLING FROST 03 – CH  
350x350x80 | 3x1W LED



SPARKLING FROST 04 – CH  
550x550x80 | 3x1W LED

CHANDELIERS



SPARKLING FROST 05 – CH  
550x550x80 | 3x1W LED



SPARKLING FROST 06 – CH  
550x550x80 | 3x1W LED

WALL LAMPS



SPARKLING FROST 01 – WL  
250x250x65 | 2x1W LED



SPARKLING FROST 02 – WL  
250x250x65 | 2x1W LED



SPARKLING FROST 03 – WL  
250x250x65 | 2x1W LED

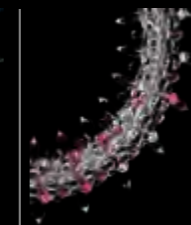
COLOURS



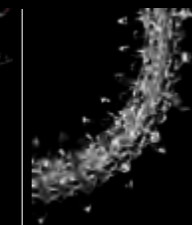
CRYSTAL



CRYSTAL + 6006



CRYSTAL + 1001



CRYSTAL + 8007



MATT STAINLESS STEEL



MATT BRASS

SURFACE FINISHES

NOTE

SPARKLING FROST is a lightning circle made of metal and sparkling glass elements.

Lighting fixtures are shown here for the purposes of illustration only and the designs can be tailored depending on the client's requirements and technical feasibility. Likewise, the full range of surface finishes and colour designs may be more extensive than those shown.



# VERRE

VERRE is a combination of sharp edges with fine and rounded lines. The contrast of these lines is further enhanced by a subtle decor emphasising the shape of each individual glass segment. Precisely hinged segments then form splendid spirals.

Designed by **Linda Jůnová**









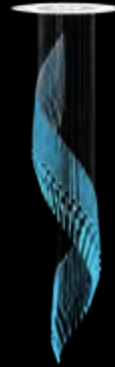


CHANDELIERS

LIGHTING FIXTURES



VERRE 01 - CH  
550x2000 | 22x1W LED



VERRE 02 - CH  
450x1500 | 12x1W LED



VERRE 03 - CH  
500x1600 | 20x1W LED

WALL LAMP



VERRE - WL  
260x800x120 | 5x1W LED



COLOURS



N90090 SIAM RUBY



N60002 AQUA



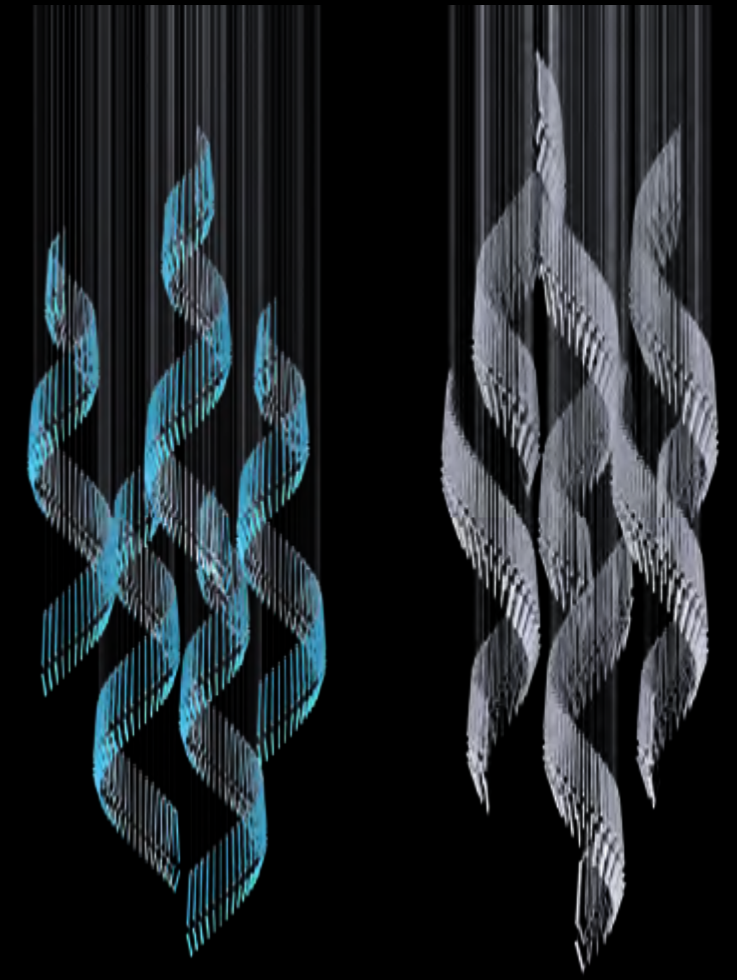
N60240 AQUA GREEN



SANDBLASTED



SANDBLASTED + N60320  
DARK AQUA



VERRE 01 - I  
1300x3000

VERRE 02 - I  
1200x3000

NOTE

VERRE is a spiral-shaped light fitting made from cut flat glass with a touch of colour.

Lighting fixtures are shown here for the purposes of illustration only and the designs can be tailored depending on the client's requirements and technical feasibility. Likewise, the full range of surface finishes and colour designs may be more extensive than those shown.



## CARA

Cara is the journey, the shift in concept: it is a fantastic wild flower that hides the spirit of blooming summer meadows. The basis is a wire construction that carries glass components, the effect elements of the whole design. It is a rich and impressive lighting fixture that does not deny the playfulness and variability of its essence. It is certain to be the star feature in any interior.

Designed by **Monika Šilhánová**







CHANDELIERS



CARA 01 - CH  
300x500 | 1x9W



CARA 02 - CH  
350x760 | 1x9W



CARA 01 - I  
3x 350x760 | 3x9W

WALL LAMP



CARA - WL  
250x500x170 | 1x20W

TABLE LAMP



CARA - TL  
240x350 | 1x20W

FLOOR LAMP



CARA - FL  
350x770 | 1x9W



CARA 02 - I  
3x 300x500, 2x 350x760 | 5x9W

COLOURS



01 TRANSPARENT 02 SANDBLASTING 03 WHITE 04 LIGHT GREY 05 DARK GREY 06 BLACK 07 GOLD 08 ROSE GOLD 09 SILVER

COLOURS



10 YELLOW 11 ORANGE 12 BROWN 13 AQUA BLUE 14 BLUE 15 VIOLET

SURFACE FINISHES



POLISHED BRASS POLISHED NICKEL  
COPPER NICKEL BLUE

NOTE

CARA is a combination of a metal wire frame and blown glass parts, which are individually coloured to form a pattern.

Lighting fixtures are shown here for the purposes of illustration only and the designs can be tailored depending on the client's requirements and technical feasibility. Likewise, the full range of surface finishes and colour designs may be more extensive than those shown.





# MANHATTAN

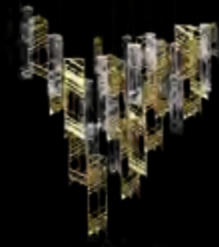
Manhattan is a ceiling installation inspired by the city's silhouette, a city landscape full of modern skyscrapers. It consists of a number of detailed glass and metal elements that refer to the technical construction of the modern period. The play on individual, triangular-like elements reminiscent of beam construction has an extraordinary charm.

Designed by **Monika Šilhánová**

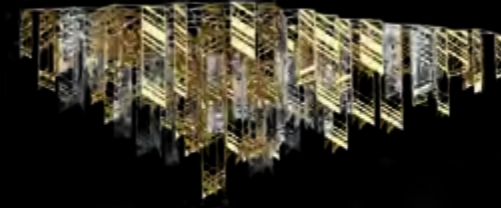




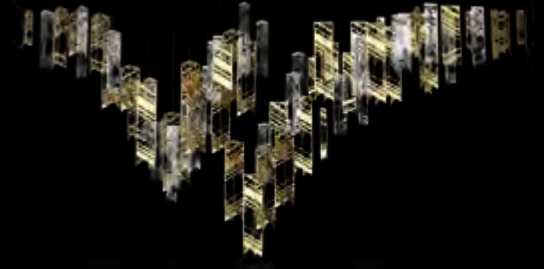
LIGHTING FIXTURES



MANHATTAN 01 - I  
1550x1700x650



MANHATTAN 02 - I  
3000x1100x800



MANHATTAN 03 - I  
3800x1900x800

CHANDELIERS

LIGHTING FIXTURES



MANHATTAN 01 - CH  
140x600 | 1x40W



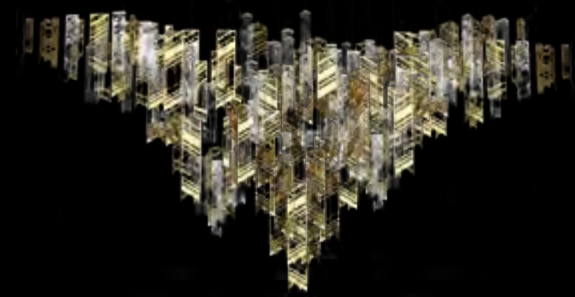
MANHATTAN 02 - CH  
100x450 | 1x40W



MANHATTAN 03 - CH  
140x300 | 1x40W



MANHATTAN 04 - I  
2x 140x600, 1x 100x450, 1x 140x300 | 4x40W



MANHATTAN 05 - I  
3800x1900x800

MATERIALS



POLISHED BRASS



POLISHED NICKEL



SANBLASTED GLASS  
AND POLISHED BRASS



SANBLASTED GLASS  
AND POLISHED NICKEL

NOTE

MANHATTAN features triangular base elements made from a metal cut frame or sandblasted flat glass.

Lighting fixtures are shown here for the purposes of illustration only and the designs can be tailored depending on the client's requirements and technical feasibility. Likewise, the full range of surface finishes and colour designs may be more extensive than those shown.

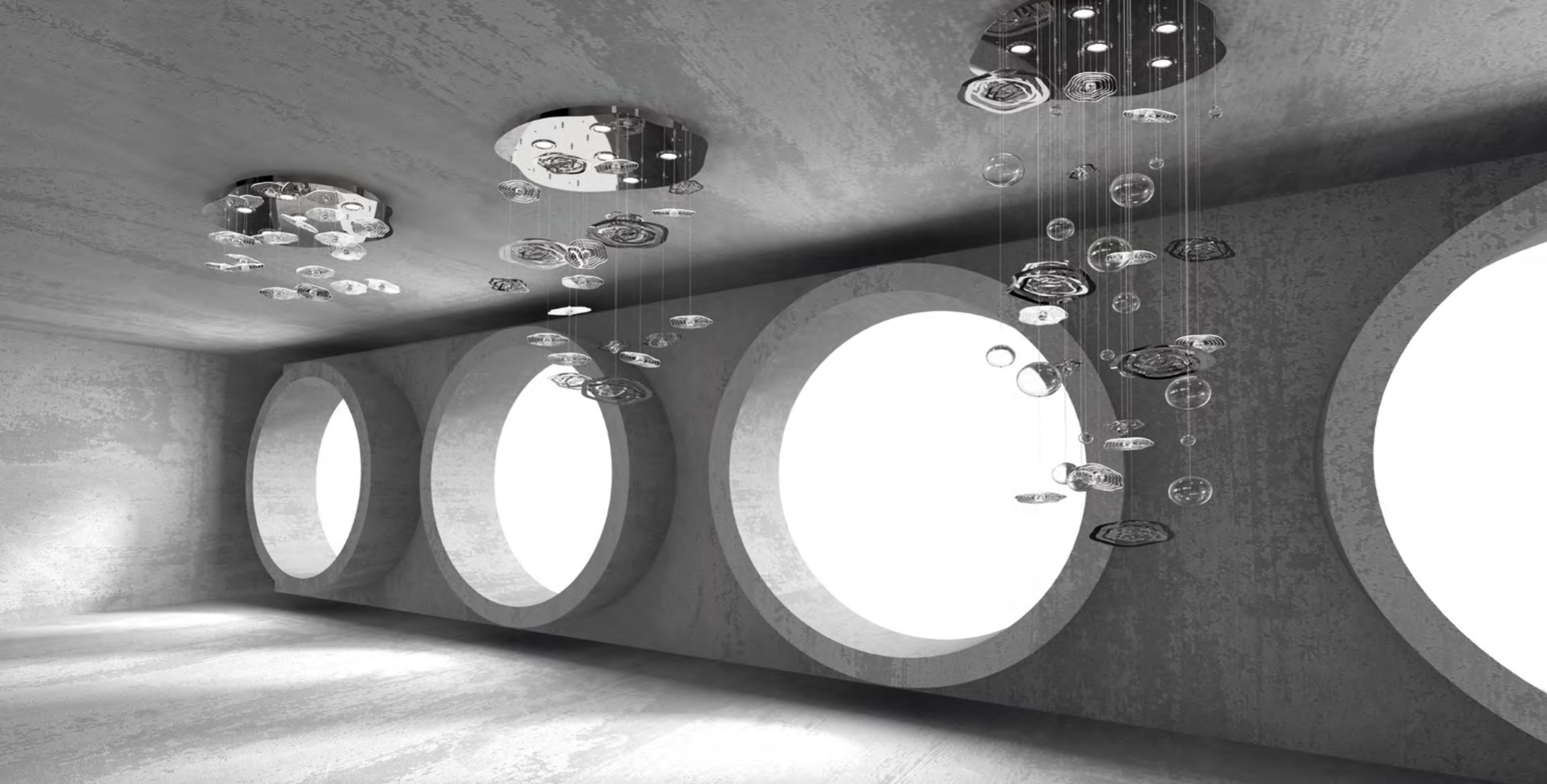


## REFLECTION

This installation, consisting of several segments of irregular shapes, is inspired by the image of a single drop falling onto the water's surface. The living surface of the water is simulated by lines on unusual innovative material, the subject of everyday use, which gives it a new artistic use. Its reflection mirrors not only the glittering stone, but also the moment of presence, the surrounding world, the record of the situation that is the reflection / capture of today's society. The transformation of this shape also resulted in metal segments, in which the intentional deformation emphasises the dynamics of movement.

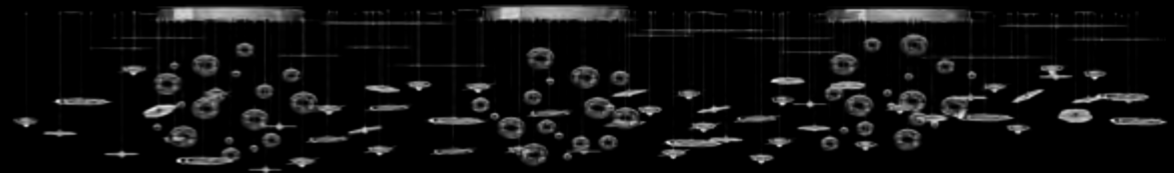
Designed by **Petra Vondráčková**







LIGHTING FIXTURE



REFLECTION - I  
4700x700x1500

CHANDELIERS



REFLECTION 01 - CH  
700x850 | 6x25W



REFLECTION 02 - CH  
700x550 | 6x25W

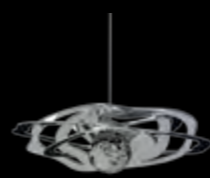


REFLECTION 03 - CH  
700x300 | 6x25W

MATERIALS



MATT BRASS  
+ BALL 30



STAINLESS STEEL  
(REVERSE MATT)  
MATT + BALL 30



SANDBLASTED  
MIRROR + BALL 30



GLASS OVALS  
40-120

NOTE

REFLECTION's quintessential elements are sandblasted mirrors, which are paired with cut metal frames or other glass elements to achieve the perfect look.

Lighting fixtures are shown here for the purposes of illustration only and the designs can be tailored depending on the client's requirements and technical feasibility. Likewise, the full range of surface finishes and colour designs may be more extensive than those shown.

WALL LAMPS



REFLECTION 01 - WL  
800x300 | 25x1W LED



REFLECTION 02 - WL  
150x200 | 1x1W LED



REFLECTION 03 - WL  
150x180 | 1x1W LED



REFLECTION 04 - WL  
150x200 | 1x1W LED



# LUMINIS

The light of the sea, a proof of the sophistication of nature, is the inspiration for a lighting installation that shows the elusiveness of the beauty of glowing organisms that can light up the oceans. They possess great fragility and, at the same time, strength. All these aspects are hidden in the glass, which has become the core material of the installation. Nature is an inexhaustible well of inspiration and it is up to us whether we appreciate it.

Designed by **Veronika Šindelářová**



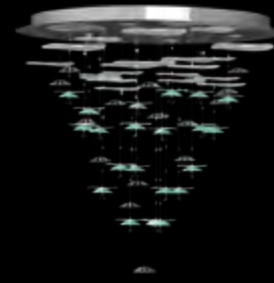






CHANDELIERS

LIGHTING FIXTURE



LUMINIS 01 – CH  
1000x1050 | 12x35W



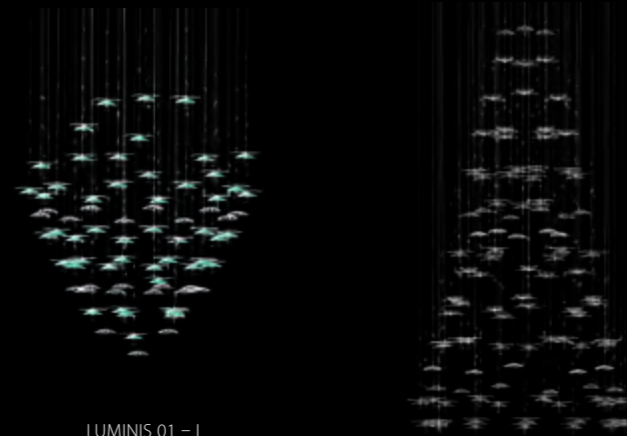
LUMINIS 02 – CH  
1000x1400 | 12x35W

WALL LAMP

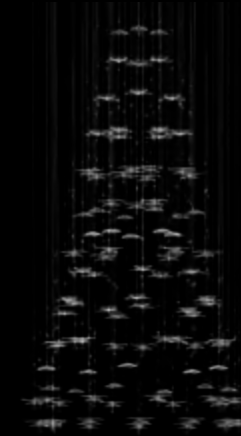
LIGHTING FIXTURE



LUMINIS – WL  
250x550x155 | 2x40W



LUMINIS 01 – I  
950x1000



LUMINIS 02 – I  
930x1650



LUMINIS 03 – I  
950x1950x400

COLOURS AND SURFACE FINISHES



AQUA AND WHITE



AMBER AND POLISHED BRASS



CLEAR AND POLISHED NICKEL

NOTE

LUMINIS is a light fitting composed of subtle parts: blown and coloured glass bowls, slumped glass circles and finely cut metal elements.

Lighting fixtures are shown here for the purposes of illustration only and the designs can be tailored depending on the client's requirements and technical feasibility. Likewise, the full range of surface finishes and colour designs may be more extensive than those shown.



# DOMINO

The common element of the Domino collection is a wide variety of metallic segments with LED stripes. These segments can be composed as shapes, creating chains and those can then be branched further. The designs can be installed on both walls and ceilings, and even moving from wall to wall or ceiling, making this collection unique. The fixtures are designed especially for modern interiors, both as the main light source or as indirect lighting. Due to their very minimal drop measurements they are suitable for spaces with low ceilings where it is not possible to fit conventional light fittings.

Designed by **Jiří Vencel**





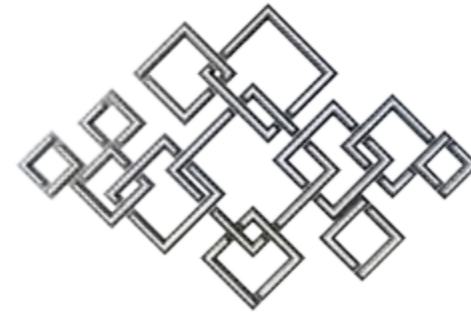




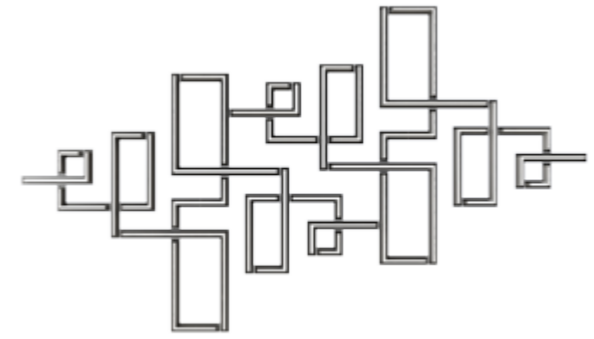




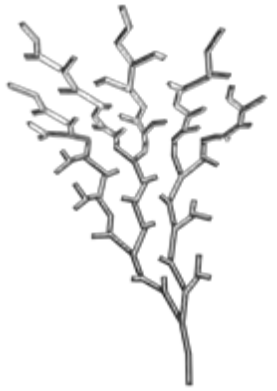
LIGHTING FIXTURES



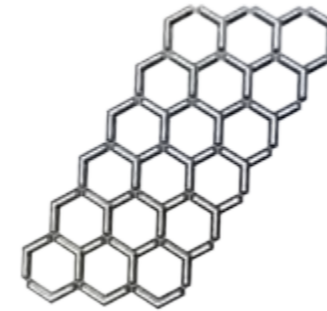
SQUARES - I  
1850x1230x45 | LED



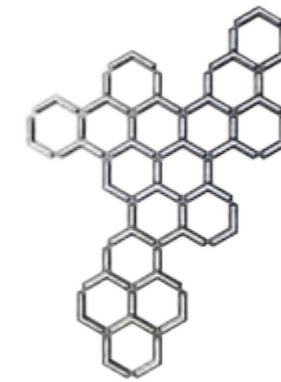
MAZE 01 - I  
3165x1830x45 | LED



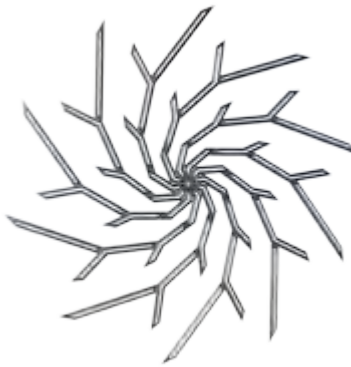
CRACK - I  
1555x2355 on the wall + 2265x1960  
on the ceiling | LED



HONEYCOMBS 01 - I  
1425x1415x45 | LED



HONEYCOMBS 02 - I  
1300x1850x45 | LED



WHIRL - I  
Ø 2210x45 | LED

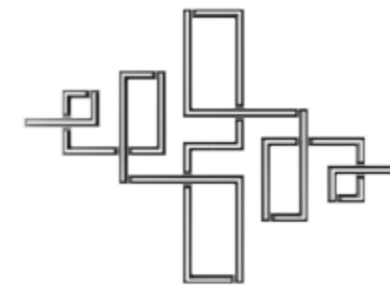
SURFACE FINISHES



BRONZE COLOUR  
PLATED STEEL



MATT STAINLESS  
STEEL



MAZE 02 - I  
2000x1450x45 | LED

NOTE

DOMINO has a simple metal base and is a treasured light source. These geometric elements throw shadow patterns onto the walls or ceiling.

Lighting fixtures are shown here for the purposes of illustration only and the designs can be tailored depending on the client's requirements and technical feasibility. Likewise, the full range of surface finishes and colour designs may be more extensive than those shown.

## OUR TEAM OF DESIGNERS

“Let me introduce you to our team of designers who can turn the lighting fixtures of your dreams into reality. It is our aim to design lighting fixtures down to the very last detail which, when complete, will make an elegant addition to your interior. Naturally, we put a significant emphasis on functionality and safety when designing our fixtures. With hundreds of successful projects under our belt, we have a proven ability to work to a wide range of designs. This ability, combined with our exceptional manufacturing capabilities, mean that we can produce lighting fixtures that chime perfectly with your individual interiors, be they traditional or modern, taking into account the requirements of different cultures.”

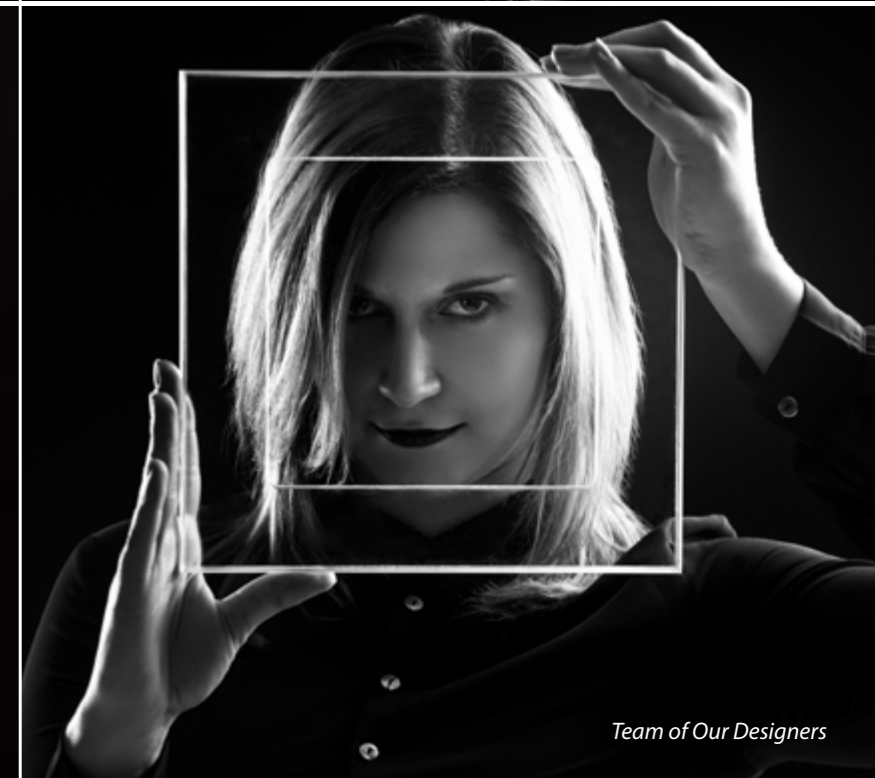
Jiří Vencel, Head of Design



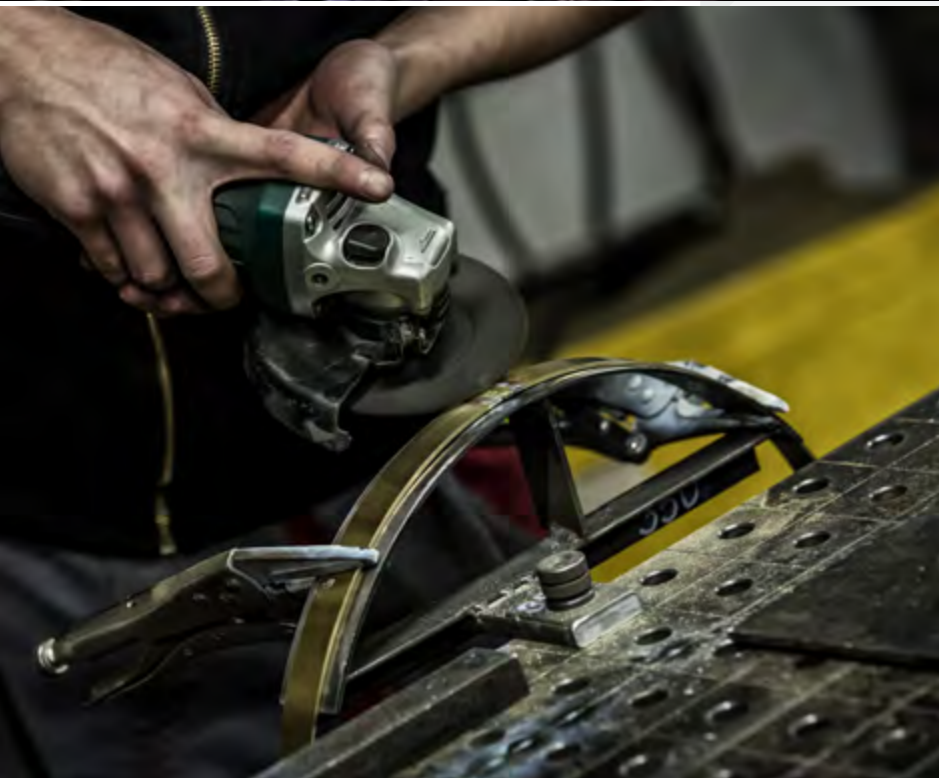


## OUR OFFER

Thanks to our exclusive experience in the field and our flexible production facilities, we can create unique or large-scale lighting to our own designs or to yours. Our experienced team of designers can accommodate all the needs and requirements our customers may have. Our highly skilled craftsmen ensure high standards, top quality and original lighting products. 3D sketches created using SolidWorks software enable our customers to see how their lighting will look and to fine tune the details.







## INSTALLATION

Our team will maintain contact with you during the construction of your building. We will send you construction readiness requirements in advance, such as the weight of the lighting fixtures, the electricity input requirements, etc. Fixture assembly is carried out by our experienced team of assemblers for both domestic and international projects.





ARTGLASS

CHANDELIERS FROM BOHEMIA

ARTGLASS s.r.o.

Smetanova 1659/42, 466 01 Jablonec nad Nisou

[info@artglass.cz](mailto:info@artglass.cz)

+420 483 369 111, +420 483 369 113

CZECH REPUBLIC

[WWW.ARTGLASS.CZ](http://WWW.ARTGLASS.CZ)